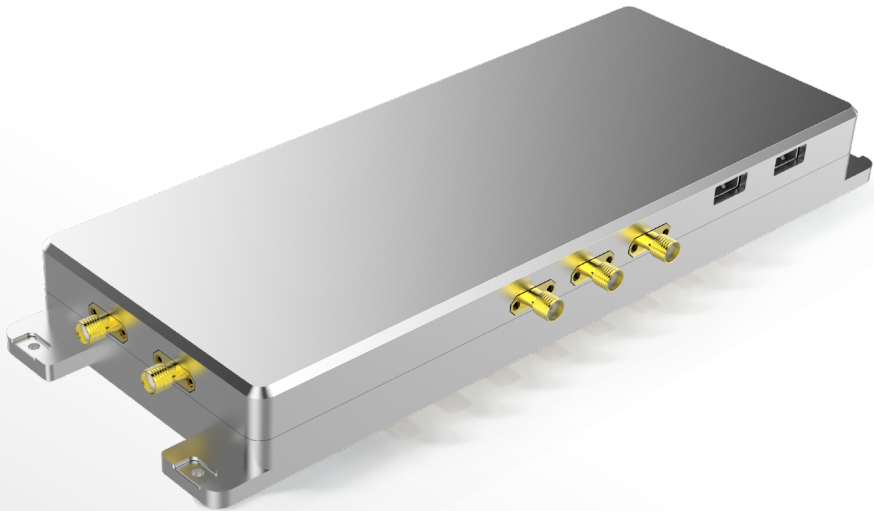


EAB-002

Embedded Computer



1. Advantages

Feature	Description
CPU	Hexa-core 64 bit processor (Dual-core Cortex-A72+Quad-core Cortex-A53) Frequency is up to 1.8GHz
GPU	Mali-T860MP4 GPU Supports OpenGL ES1.1/2.0/3.0/3.1, OpenVG1.1, OpenCL, DX11
NPU	1G independent RAM, computing power up to 3.0TOPs Supports multiple face recognition algorithms, Supports TensorFlow/Caffe Model
Multiple Communication Interface	Supports LTE data service, Bluetooth 5.0, Supports 2.4G/ 5G WIFI Supports 4 RS232 interfaces, 1 RS485 interface Supports CAN Bus Supports USB3.0
Gyroscope	Nine axis (Acceleration+Gyroscope+Magnetometer)
Cameras Interface	2 USB3.0 (Type-A) cameras interfaces , Supports dual 4K HD cameras input
HDMI	1 HDMI2.0 (Type-A) interface Supports 4K/ 60fps output
Classy Industrial Design	Compact and artistic design with CNC aluminum material.

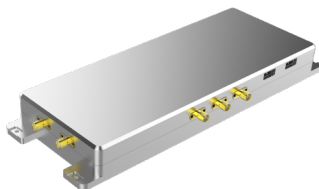
2. Product View



Front view



Rear view



Top view

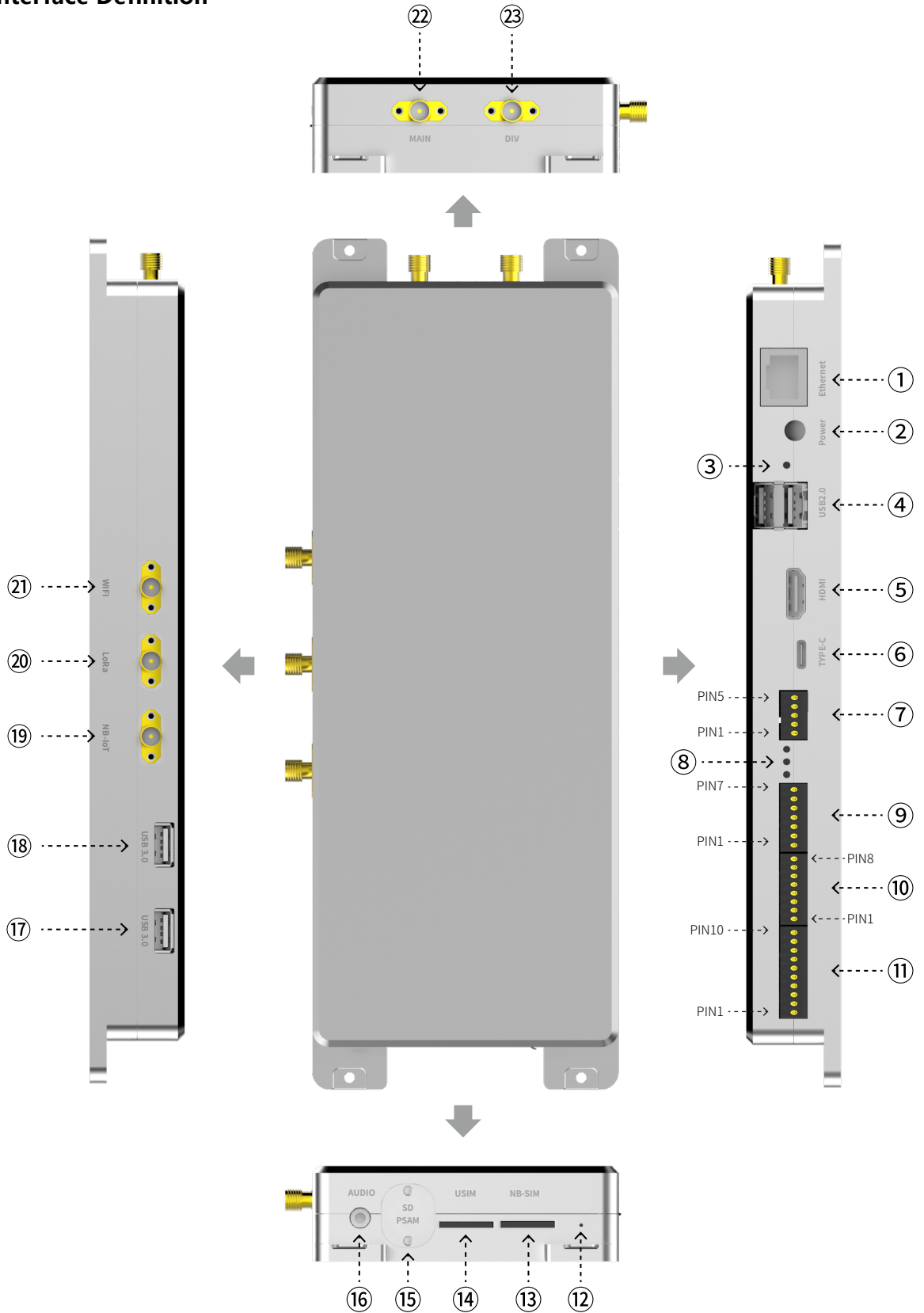


Bottom view

3. Electrical Parameters

Mechanical Parameters		System Characteristics	
Material	CNC Aluminum	Operating System	Android 9.0
Dimensions	250(L)*94(W)*29(H)mm	CPU	Hexa-core 64 bit processor (Dual-core Cortex-A72+Quad-core Cortex-A53) Frequency is up to 1.8GHz
Weight	600g	GPU	Mali-T860MP4 GPU Supports OpenGL ES1.1/2.0/3.0/3.1 , OpenVG1.1, OpenCL, DX11
Communications		NPU	1G independent RAM computing power up to 3.0TOPs Supports multiple face recognition algorithms Supports TensorFlow/Caffe Model
WIFI	SMA interface, Supports 2.4G/ 5G WIFI	RAM+ROM	2G+32G 4G+64G Optional✓
LTE	Supports LTE data service Optional✓	Input Voltage	DC 12V~24V
Bluetooth	Bluetooth 5.0	Maximum Power	60W
Ethernet	10/100/1000Mbps ethernet	GPIO	4 inputs, 4 outputs, Up to 5Kv isolation voltage
USB	2 USB2.0 Hos (t Type-A) interfaces 2 USB3.0 Hos (t Type-A) interfaces 1 USB3.0 OTG (Type-C) interface	HDMI	1 HDMI2.0 (Type-A) interface Supports 4K/ 60fps output
Serial Interface	4 RS232 interfaces, 1 RS485 interface	Cameras Interface	2 USB3.0 (Type-A) cameras interfaces Supports dual 4K HD cameras input
Industrial Bus	CAN Bus	Gyroscope	Nine axis (Acdelection+Gyroscope+Magnetometer)
Application Environment		Audio	1 Stereo audio output jack
Operating Temp	-20°C~+85°C	SIM Card	1 Micro SIM slot
Storage Temp	-40°C~+85°C	PSAM	1 Micro PSAM slot
Humidity	5%RH - 95%RH (non-condensing)	SD Card	1 Micro SD3.0 slot
Ingress Protection	IP53	Online Upgrade	The OS kernel and APP can be updated online remotely
Heat Dissipation	Air cooling		

4.Interface Definition



PIN Assignment			
PIN ID	Function	Description	
①	Ethernet	10/100/1000Mbps, ethernet	
②	POWER	DC 12V ~ 24V	
③	Indicator Light	Power Indicator	
④	USB	2 USB2.0 Host(TypeA) interfaces	
⑰⑱		2 USB3.0 Host(Type-A) interfaces	
⑤	HDMI	1 HDMI 2.0 (Type-A) interfaces, supports 4K/ 60fps output	
⑥	Type-C	1 USB3.0 OTG (Type-C) interface	
⑦	RS232	1. RTS1	2. CTS
		3. TX1	4. RX1
		5. GND	
⑧	Indicator Light	Custom Indicator	
⑨	RS232	1. TX2	2. RX2
		3. TX3	4. RX3
		5. TX4	6. RX4
		7. GND	
⑩	CAN Bus	1. GND (CAN)	2. CANH
		3. CANL	
	RS485	1. GDN (485)	2. 485R+
		3. 485R-	4. 485T-
		5. 485T+	
⑪	GPIO	1. IN4	2. IN3
		3. IN2	4. IN1
		5. OUT4	6. OUT3
		7. OUT2	8. OUT1
		9. GND (GPIO)	10. 12V
⑫	Power Button	Power Button	
⑬	NB-SIM	1 NB-SIM slot	
⑭	USIM	1 USIM slot	
⑮	SD/PSAM	1 Micro SD3.0 slot/ 1 PSAM slot	
⑯	AUDIO	1 Stereo audio output jack	
⑲	NB-IOT	NB-IoT antenna	
⑳	LoRa	LoRa antenna	
㉑	WIFI	SMA female, supports 2.4G/ 5G WIFI	
㉒	MAIN	LTE Main antenna	
㉓	DIV	LTE Diversity antenna	